



DATASHEET

SLC 100-12S

12V 100AH

AGM SEALED VRLA BATTERY
LONG LIFE 10-12 YEARS OF EXPECTED LIFETIME

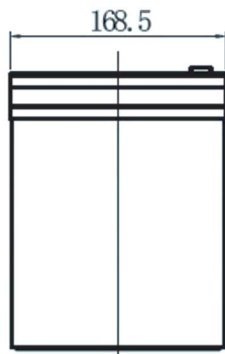
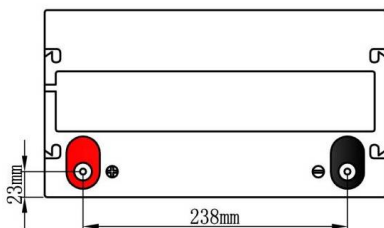
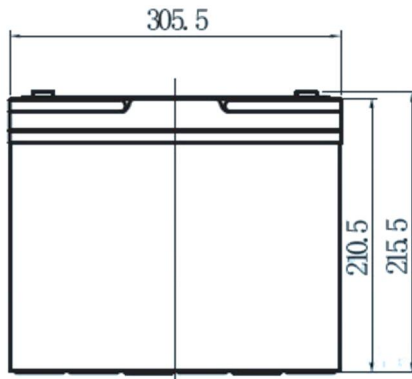
(EUROBAT)

SPECIFICATIONS

Nominal Voltage	12V	
Nominal Capacity	100Ah	
Terminal	M8	
Approx. Weight	Approx 28 kg (61,7 lbs)	
Container Material	ABS	
Dimensions	Length	306±3 mm (12,04 inches)
	Width	169±2 mm (6,65 inches)
	Container Height	211±2 mm (8,30 inches)
	Total Height (with terminal)	216±2 mm (8,50 inches)
Rated Capacity	100 Ah / 5A	(20 hr, 1,80 V/cell, 25°C/77°F)
	96 Ah / 9,6A	(10 hr, 1,80 V/cell, 25°C/77°F)
	82,5 Ah / 16,5A	(5 hr, 1,75 V/cell, 25°C/77°F)
	73,2 Ah / 24,4A	(3 hr, 1,75 V/cell, 25°C/77°F)
	60 Ah / 60A	(1 hr, 1,60 V/cell, 25°C/77°F)
Max. Discharge Current	1.100,0 A (5 s)	
Internal Resistance	Approx 5,7 mΩ	

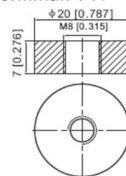
Operating Temperature	Discharge	-15 ÷ 50°C (5 ÷ 122°F)
	Charge	0 ÷ 40°C (32 ÷ 104°F)
	Storage	-15 ÷ 40°C (5 ÷ 104°F)

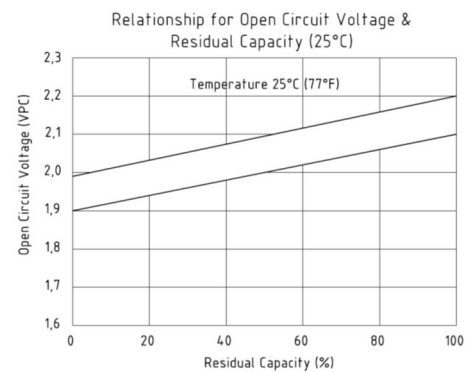
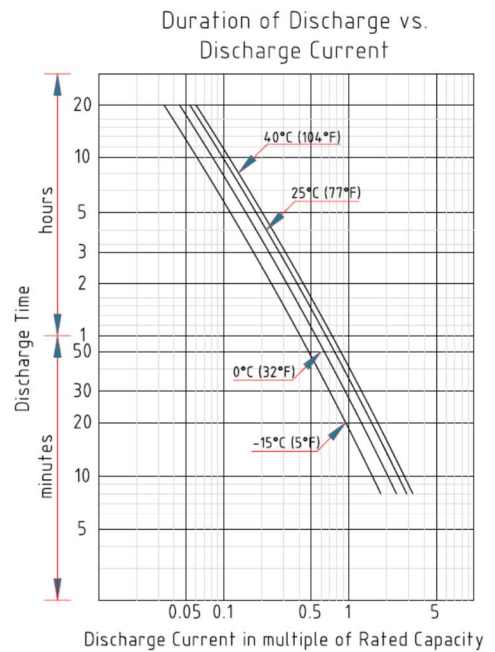
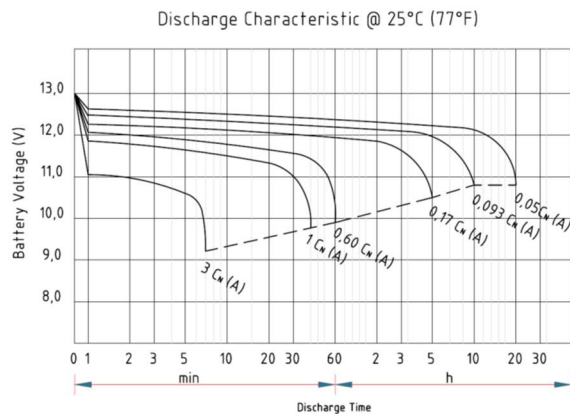
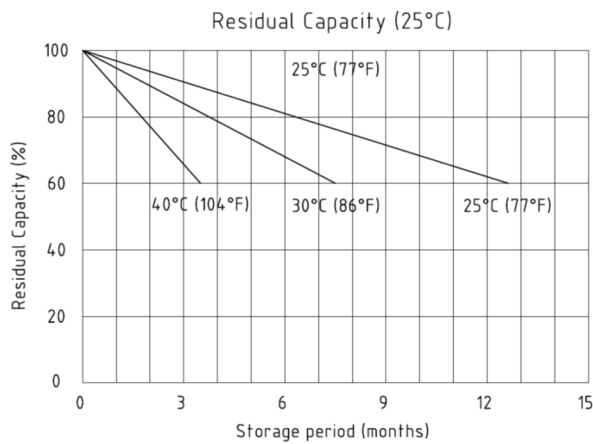
Nominal Operating Temp. Range	25±3°C (77±5°F)	
Cycle Use	Initial Charging Current less than 20 A Voltage	14,4 ÷ 15,0V at 25°C (77°F)
	Temperature Coefficient	-30mV/°C
Standby Use	No limit on Initial Charging Current Voltage	13,5 ÷ 13,8 V at 25°C (77°F)
	Temperature Coefficient	-20mV/°C
Capacity affected by Temperature	40°C (104°F)	103%
	25°C (77°F)	100%
	0°C (32°F)	86%
Self discharge	Enerpower SLC series batteries may be stored for up to 6 months at 25°C (77°F) and then a freshening charge is required. For higher temperatures the time interval will be shorter.	



Unit: mm [inches]

Terminal: T11





Constant Current Discharge (Amperes) at 25°C (77°F)

F.V / Time	10 min	15 min	20 min	30 min	45 min	1 h	2 h	3 h	4 h	5 h	6 h	8 h	10 h	20 h
1,85V / cell	141,3	119,7	101,6	78,5	58,8	47,7	29,2	22,5	18,3	15,3	13,4	10,9	9,21	4,98
1,80V / cell	167,4	137,6	114,2	87,5	65,0	51,7	31,3	23,8	19,4	16,2	14,1	11,4	9,60	5,00
1,75V / cell	183,7	149,0	122,1	91,5	67,6	53,9	32,5	24,4	19,9	16,5	14,5	11,6	9,74	5,11
1,70V / cell	200,1	159,8	129,3	96,0	70,5	55,9	33,6	25,1	20,4	16,9	14,8	11,8	9,84	5,18
1,67V / cell	208,1	164,9	133,1	98,5	71,7	56,9	34,0	25,5	20,7	17,1	14,9	11,8	9,91	5,21
1,65V / cell	216,1	170,0	136,9	101,1	73,0	58,0	34,5	25,9	21,0	17,3	15,1	11,9	9,98	5,24
1,60V / cell	235,8	181,1	145,1	106,5	76,0	60,0	35,7	26,8	21,6	17,8	15,4	12,1	10,14	5,29

Constant Power Discharge (Watts) at 25°C (77°F)

F.V / Time	10 min	15 min	20 min	30 min	45 min	1 h	2 h	3 h	4 h	5 h	6 h	8 h	10 h	20 h
1,85V / cell	267,60	230,90	199,60	158,00	121,00	101,00	61,20	44,40	36,20	30,10	26,30	21,31	17,98	9,67
1,80V / cell	319,10	266,10	224,40	175,70	134,00	110,00	65,80	47,30	38,30	31,90	27,80	22,35	18,86	9,78
1,75V / cell	351,50	289,20	241,20	184,40	139,70	115,10	68,50	48,70	39,30	32,80	28,40	22,71	18,99	9,89
1,70V / cell	381,80	310,90	257,30	194,80	146,60	120,00	71,00	50,00	40,30	33,50	29,00	22,89	19,22	10,04
1,67V / cell	400,10	322,70	265,20	201,00	149,80	122,50	72,20	51,00	40,50	33,90	29,30	23,20	19,40	10,08
1,65V / cell	416,00	333,60	274,10	205,70	151,50	124,70	73,00	51,70	41,60	34,20	29,50	23,44	19,50	10,14
1,60V / cell	447,70	352,70	289,60	216,40	157,60	128,70	75,30	53,20	42,70	35,00	30,10	23,59	19,73	10,21