

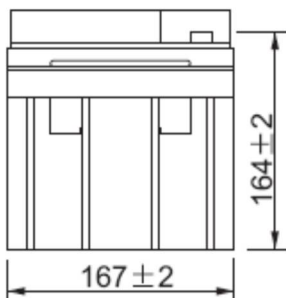
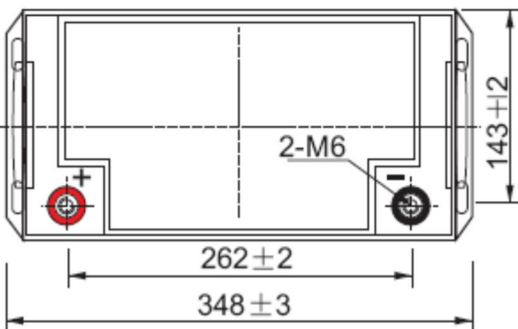
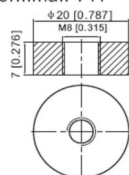
DATASHEET
SLC 65-12
12V 65AH

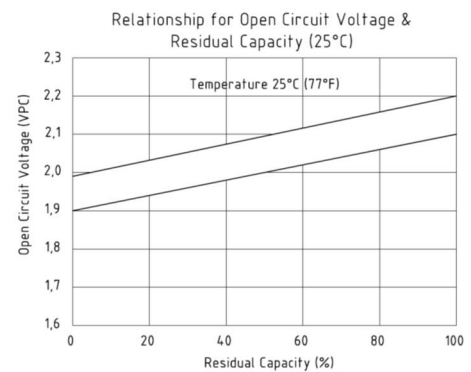
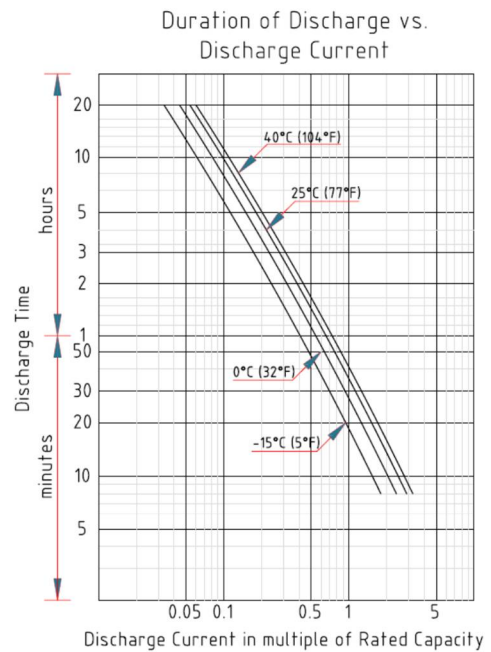
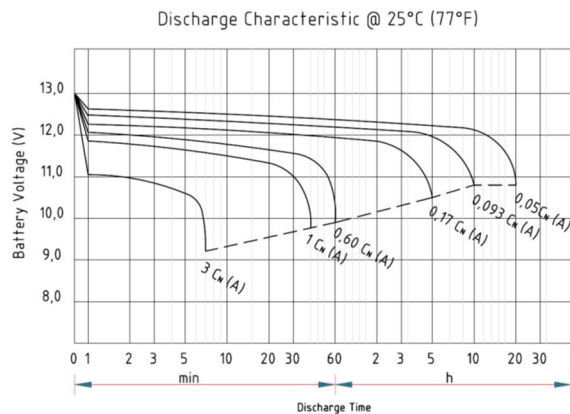
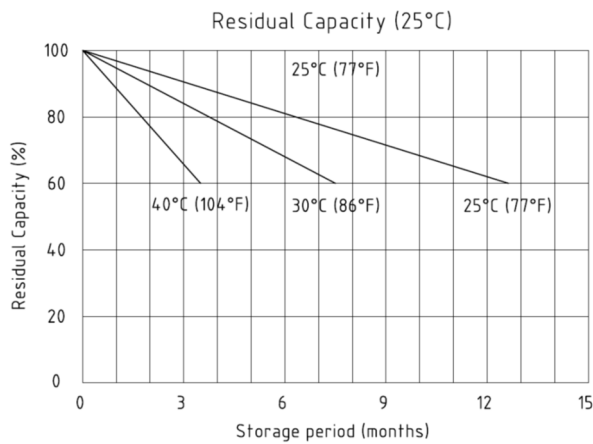
AGM SEALED VRLA BATTERY
LONG LIFE 10-12 YEARS OF EXPECTED LIFETIME
(EUROBAT)
SPECIFICATIONS

| | | |
|------------------------|------------------------------|---------------------------------|
| Nominal Voltage | 12V | |
| Nominal Capacity | 65Ah | |
| Terminal | M8 | |
| Approx. Weight | Approx 19,2 kg (42,3 lbs) | |
| Container Material | ABS | |
| Dimensions | Length | 348 ± 3 mm (13,70 inches) |
| | Width | 167 ± 2 mm (6,57 inches) |
| | Container Height | 178 ± 2 mm (7,01 inches) |
| | Total Height (with terminal) | 178 ± 2 mm (7,01 inches) |
| Rated Capacity | 68 Ah / 3,4A | (20 hr, 1,80 V/cell, 25°C/77°F) |
| | 65 Ah / 6,5A | (10 hr, 1,80 V/cell, 25°C/77°F) |
| | 56 Ah / 11,2A | (5 hr, 1,75 V/cell, 25°C/77°F) |
| | 48,9 Ah / 16,3A | (3 hr, 1,75 V/cell, 25°C/77°F) |
| | 41,6 Ah / 41,6A | (1 hr, 1,60 V/cell, 25°C/77°F) |
| Max. Discharge Current | 780,0 A (5 s) | |
| Internal Resistance | Approx 7,3 mΩ | |

| | | |
|-----------------------|-----------|------------------------|
| Operating Temperature | Discharge | -15 ÷ 50°C (5 ÷ 122°F) |
| | Charge | 0 ÷ 40°C (32 ÷ 104°F) |
| | Storage | -15 ÷ 40°C (5 ÷ 104°F) |

| | |
|----------------------------------|---|
| Nominal Operating Temp. Range | 25 ± 3°C (77 ± 5°F) |
| Cycle Use | Initial Charging Current less than 13 A Voltage 14,4 ÷ 15,0V at 25°C (77°F) Temperature Coefficient -30mV/°C |
| Standby Use | No limit on Initial Charging Current Voltage 13,5 ÷ 13,8V at 25°C (77°F) Temperature Coefficient -20mV/°C |
| Capacity affected by Temperature | 40°C (104°F) 103% 25°C (77°F) 100% 0°C (32°F) 86% |
| Self discharge | Enerpower SLC series batteries may be stored for up to 6 months at 25°C (77°F) and then a freshening charge is required. For higher temperatures the time interval will be shorter. |


 Unit: mm [inches]
 Terminal: T11




Constant Current Discharge (Amperes) at 25°C (77°F)

| F.V / Time | 10 min | 15 min | 20 min | 30 min | 45 min | 1 h | 2 h | 3 h | 4 h | 5 h | 6 h | 8 h | 10 h | 20 h |
|--------------|--------|--------|--------|--------|--------|-------|------|------|------|------|-------|------|------|------|
| 1,85V / cell | 91,7 | 79,0 | 68,6 | 53,2 | 40,2 | 32,6 | 19,7 | 15,0 | 12,3 | 10,5 | 9,20 | 7,44 | 6,26 | 3,35 |
| 1,80V / cell | 107,3 | 89,9 | 77,2 | 58,3 | 43,5 | 34,9 | 21,0 | 15,8 | 12,9 | 11,0 | 9,59 | 7,74 | 6,50 | 3,40 |
| 1,75V / cell | 117,0 | 98,2 | 82,7 | 62,5 | 46,2 | 36,9 | 21,9 | 16,3 | 13,2 | 11,2 | 9,78 | 7,86 | 6,57 | 3,44 |
| 1,70V / cell | 126,4 | 104,8 | 87,8 | 65,3 | 48,1 | 38,5 | 22,6 | 16,8 | 13,6 | 11,5 | 9,98 | 7,97 | 6,63 | 3,48 |
| 1,67V / cell | 131,25 | 108,1 | 90,3 | 66,9 | 49,2 | 39,25 | 22,9 | 17 | 13,7 | 11,6 | 10,09 | 8,03 | 6,67 | 3,50 |
| 1,65V / cell | 136,1 | 111,4 | 92,8 | 68,5 | 50,3 | 40,0 | 23,2 | 17,2 | 13,8 | 11,7 | 10,20 | 8,09 | 6,70 | 3,52 |
| 1,60V / cell | 146,6 | 119,2 | 97,7 | 71,9 | 52,3 | 41,6 | 23,9 | 17,6 | 14,1 | 11,9 | 10,30 | 8,20 | 6,79 | 3,54 |

Constant Power Discharge (Watts) at 25°C (77°F)

| F.V / Time | 10 min | 15 min | 20 min | 30 min | 45 min | 1 h | 2 h | 3 h | 4 h | 5 h | 6 h | 8 h | 10 h | 20 h |
|--------------|--------|--------|--------|--------|--------|-------|-------|-------|-------|-------|-------|-------|-------|------|
| 1,85V / cell | 189,01 | 163,50 | 142,19 | 110,24 | 83,19 | 67,35 | 40,16 | 30,54 | 25,00 | 21,27 | 18,59 | 15,04 | 12,72 | 6,80 |
| 1,80V / cell | 223,58 | 187,62 | 161,46 | 121,78 | 90,57 | 72,55 | 43,10 | 32,29 | 26,24 | 22,26 | 19,45 | 15,67 | 13,14 | 6,88 |
| 1,75V / cell | 246,96 | 207,08 | 174,54 | 131,64 | 96,91 | 77,28 | 45,16 | 33,44 | 26,98 | 22,76 | 19,80 | 15,91 | 13,26 | 6,93 |
| 1,70V / cell | 270,08 | 223,35 | 187,15 | 138,55 | 101,59 | 81,19 | 46,76 | 34,40 | 27,60 | 23,23 | 20,16 | 16,04 | 13,38 | 6,98 |
| 1,67V / cell | 283,20 | 232,80 | 190,10 | 142,90 | 104,30 | 83,10 | 47,60 | 34,90 | 27,90 | 23,50 | 20,30 | 16,10 | 13,50 | 7,04 |
| 1,65V / cell | 293,99 | 239,93 | 199,70 | 146,50 | 106,80 | 84,56 | 48,09 | 35,36 | 28,21 | 23,70 | 20,51 | 16,37 | 13,55 | 7,07 |
| 1,60V / cell | 317,30 | 257,24 | 210,84 | 153,91 | 111,02 | 88,02 | 49,62 | 36,19 | 28,79 | 24,17 | 20,88 | 16,50 | 13,62 | 7,08 |