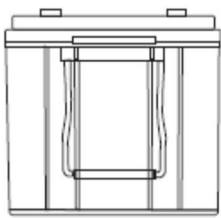
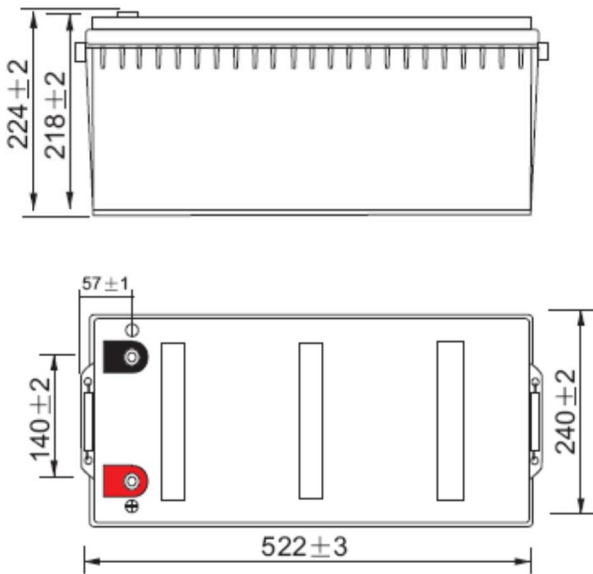
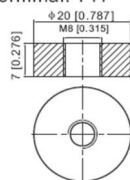



DATASHEET
SLC 200-12
12V 200AH
AGM SEALED VRLA BATTERY
LONG LIFE 10-12 YEARS OF EXPECTED LIFETIME

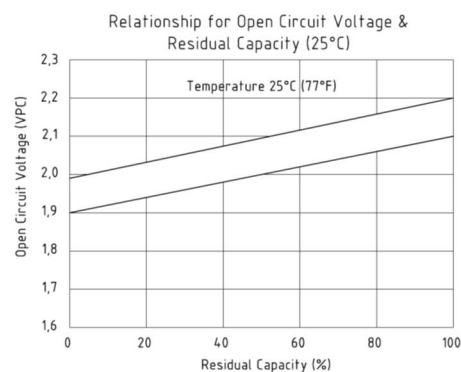
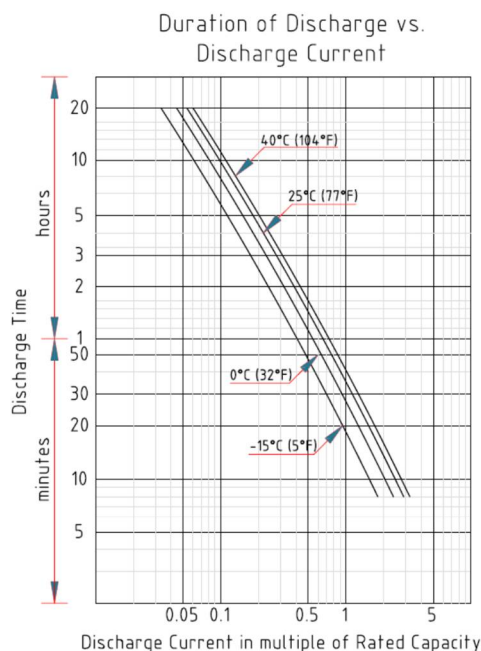
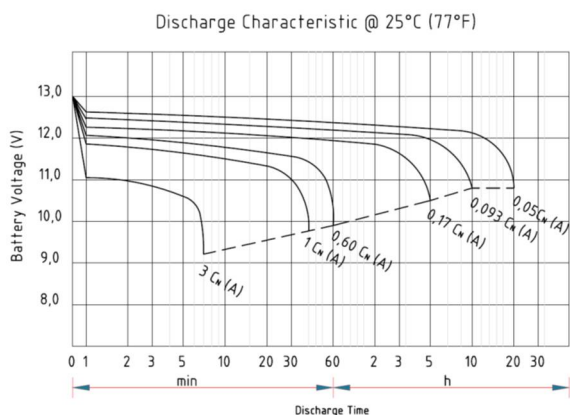
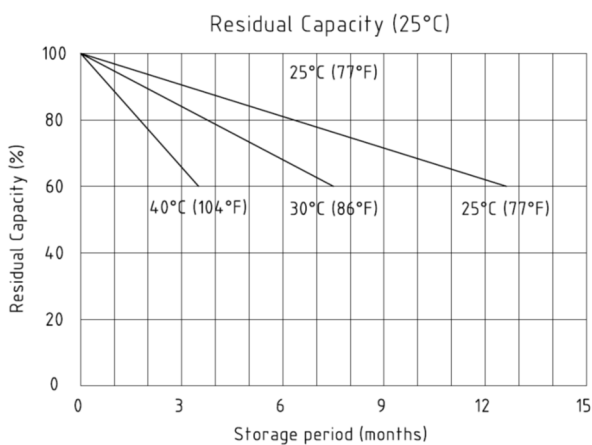
(EUROBAT)


 Unit: mm [inches]
 Terminal: T11

SPECIFICATIONS

Nominal Voltage	12V	
Nominal Capacity	200Ah	
Terminal	T11	
Approx. Weight	Approx 59 kg (130 lbs)	
Container Material	ABS	
Dimensions	Length	522±3 mm (20,55 inches)
	Width	240±2 mm (9,45 inches)
	Container Height	218±2 mm (8,58 inches)
	Total Height (with terminal)	224±2 mm (8,81 inches)
Rated Capacity	208 Ah / 10,4A	(20 hr, 1,80 V/cell, 25°C/77°F)
	200 Ah / 20A	(10 hr, 1,80 V/cell, 25°C/77°F)
	172,5 Ah / 34,5A	(5 hr, 1,75 V/cell, 25°C/77°F)
	156 Ah / 52A	(3 hr, 1,75 V/cell, 25°C/77°F)
	122 Ah / 122A	(1 hr, 1,60 V/cell, 25°C/77°F)
Max. Discharge Current	2.000,0 A (5 s)	
Internal Resistance	Approx 2,7 mΩ	

Operating Temperature	Discharge	-15÷50°C (5÷122°F)
	Charge	0÷40°C (32÷104°F)
	Storage	-15÷40°C (5÷104°F)

Nominal Operating Temp. Range	25±3°C (77±5°F)
Cycle Use	Initial Charging Current less than 40 A Voltage 14,4÷15,0V at 25°C (77°F) Temperature Coefficient -30mV/°C
Standby Use	No limit on Initial Charging Current Voltage 13,5÷13,8 V at 25°C (77°F) Temperature Coefficient -20mV/°C
Capacity affected by Temperature	40°C (104°F) 103% 25°C (77°F) 100% 0°C (32°F) 86%
Self discharge	Enerpower SLC series batteries may be stored for up to 6 months at 25°C (77°F) and then a freshening charge is required. For higher temperatures the time interval will be shorter.



Constant Current Discharge (Amperes) at 25°C (77°F)

F.V / Time	10 min	15 min	20 min	30 min	45 min	1 h	2 h	3 h	4 h	5 h	6 h	8 h	10 h	20 h
1,85V / cell	278,4	240,0	204,6	154,8	115,1	94,3	60,1	46,2	37,6	31,3	27,2	22,1	18,9	10,30
1,80V / cell	343,9	282,4	235,8	179,5	133,9	105,6	65,5	50,6	40,6	33,6	29,2	23,4	20,0	10,40
1,75V / cell	377,8	302,0	250,2	189,2	139,0	110,5	68,0	52,0	41,7	34,5	30,0	23,8	20,2	10,50
1,70V / cell	411,8	322,5	264,0	196,4	144,5	114,0	70,7	53,5	42,7	35,3	30,6	24,2	20,4	10,70
1,67V / cell	428,1	332,7	272,7	200,5	146,3	115,9	71,7	54,65	43,45	35,8	30,95	24,45	20,6	10,75
1,65V / cell	444,4	342,9	281,4	204,6	148,1	117,8	72,7	55,8	44,2	36,3	31,3	24,7	20,8	10,80
1,60V / cell	452,5	349,2	286,6	208,4	150,8	120,0	74,0	56,8	45,0	37,0	31,9	25,2	21,2	11,0

Constant Power Discharge (Watts) at 25°C (77°F)

F.V / Time	10 min	15 min	20 min	30 min	45 min	1 h	2 h	3 h	4 h	5 h	6 h	8 h	10 h	20 h
1,85V / cell	553,90	479,15	410,19	311,81	232,14	189,63	119,75	91,72	74,28	61,79	53,77	43,71	37,45	20,40
1,80V / cell	688,27	565,13	472,73	360,52	270,85	213,34	130,95	100,55	80,24	66,29	57,66	46,31	39,62	20,61
1,75V / cell	759,13	606,87	503,92	381,59	281,40	224,29	136,22	103,72	82,48	68,28	59,20	47,14	40,08	20,71
1,70V / cell	825,30	649,61	535,98	398,76	294,58	232,73	142,18	106,81	84,75	69,90	60,48	47,82	40,44	21,11
1,67V / cell	860,10	674,70	548,80	410,20	300,10	237,30	144,70	109,00	85,60	71,00	61,40	48,80	40,80	21,27
1,65V / cell	898,34	696,73	574,66	416,65	301,72	240,52	146,05	111,28	87,61	71,71	61,74	48,90	41,31	21,42
1,60V / cell	949,90	739,24	605,94	438,90	313,89	248,67	150,77	114,52	90,09	73,73	63,04	49,61	41,77	21,52