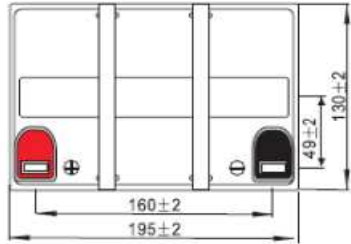
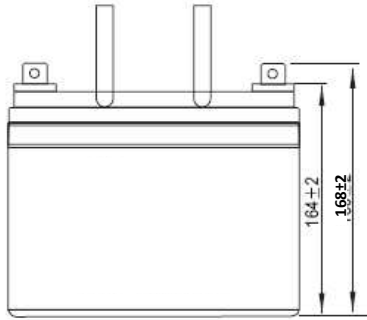




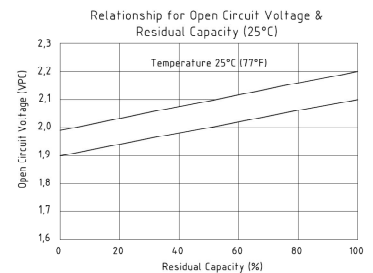
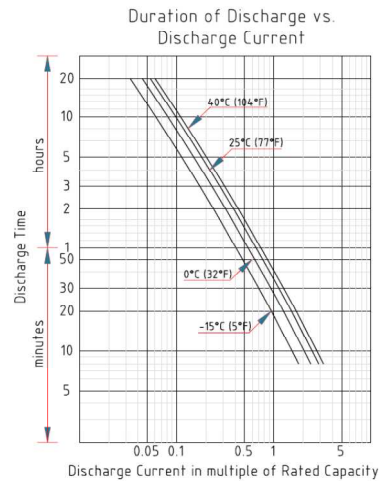
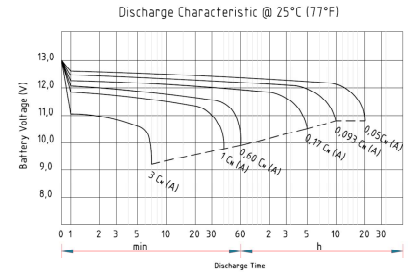
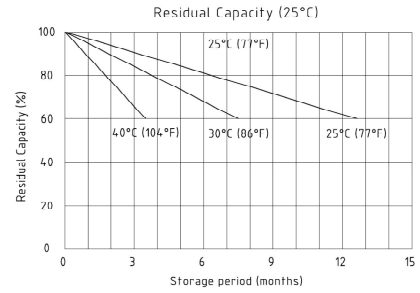
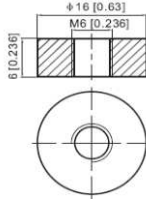
ENERPOWER

Serie SLC 33-12B (33 Ah 12V)

GENERAL PURPOSE BATTERIES



T6 Terminal
Unit: mm [inches]



Specification	
Nominal Voltage	12 V
Nominal Capacity (20 Hr)	33 Ah
Dimension	Length 195±2 mm (7,68 inches)
	Width 130±2 mm (5,12 inches)
	Container Height 164±2 mm (6,46 inches)
	Total Height (with terminal) 168±2 mm (6,61 inches)
Approx Weight	Approx 10,5 kg (23,15 lbs)
Terminal	T12
Container Material	ABS
Rated Capacity	33 Ah / 1,65A (20 hr, 1,80 V/cell, 25°C/77°F)
	30,7 Ah / 3,07A (10 hr, 1,80 V/cell, 25°C/77°F)
	28,05 Ah / 5,61A (5 hr, 1,75 V/cell, 25°C/77°F)
	25,26 Ah / 8,42A (3 hr, 1,75 V/cell, 25°C/77°F)
	20,7 Ah / 20,7A (1 hr, 1,60 V/cell, 25°C/77°F)
Max Discharge Current	495,0 A (5 s)
Internal Resistance	Approx 12,0 mΩ
Operating Temperat. Range	Discharge : -15÷50°C (5÷122°F)
	Charge : 0÷40°C (32÷104°F)
	Storage : -15÷40°C (5÷104°F)
Nominal Operating Temp. Range	25±3°C (77±5°F)
Cycle Use	Initial Charging Current less than 6,6 A Voltage 14,4÷15,0V at 25°C (77°F) Temperature Coefficient -30mV/°C
Standby Use	No limit on Initial Charging Current Voltage 13,5÷13,8 V at 25°C (77°F) Temperature Coefficient -20mV/°C
Capacity affected by Temperature	40°C (104°F) 103% 25°C (77°F) 100% 0°C (32°F) 86%
Self Discharge	Enerpower SLC series batteries may be stored for up to 6 months at 25°C (77°F) and then a freshening charge is required. For higher temperatures the time interval will be shorter.

Constant Current Discharge (Amperes) at 25°C (77°F)

F.V / Time	10 min	15 min	20 min	30 min	45 min	1 h	2 h	3 h	4 h	5 h	6 h	8 h	10 h	20 h
1,85V / cell	48,3	40,0	34,6	26,7	19,69	16,6	9,81	7,68	6,24	5,09	4,42	3,56	2,98	1,63
1,80V / cell	61,7	48,3	40,9	31,5	22,90	18,6	10,70	8,26	6,67	5,46	4,74	3,78	3,07	1,65
1,75V / cell	67,8	52,8	44,0	32,7	23,80	19,4	11,10	8,42	6,81	5,61	4,87	3,84	3,15	1,67
1,70V / cell	73,9	56,3	46,2	34,1	24,70	20,1	11,40	8,65	7,00	5,75	4,97	3,90	3,21	1,70
1,67V / cell	76,8	58,1	47,7	35,0	25,0	20,3	11,50	8,84	7,12	5,83	5,03	3,93	3,25	1,71
1,65V / cell	79,7	59,9	49,1	35,9	25,30	20,5	11,60	9,02	7,24	5,91	5,08	3,96	3,28	1,72
1,60V / cell	86,5	64,1	52,3	38,0	26,40	20,7	12,00	9,29	7,46	6,11	5,19	4,00	3,32	1,73

Constant Power Discharge (Watts) at 25°C (77°F)

F.V / Time	10 min	15 min	20 min	30 min	45 min	1 h	2 h	3 h	4 h	5 h	6 h	8 h	10 h	20 h
1,85V / cell	95,96	79,82	69,34	53,80	39,65	33,36	19,62	15,27	12,35	10,08	8,73	7,05	5,90	3,24
1,80V / cell	123,47	96,63	81,92	63,35	46,34	37,59	21,45	16,40	13,22	10,83	9,35	7,47	6,08	3,26
1,75V / cell	136,12	105,97	88,59	65,98	48,13	39,44	22,22	16,72	13,49	11,07	9,60	7,60	6,25	3,29
1,70V / cell	147,94	113,47	93,74	69,22	50,36	40,97	22,86	17,30	13,85	11,41	9,82	7,72	6,38	3,35
1,67V / cell	154,80	117,90	95,80	71,50	51,30	41,40	23,30	17,60	13,90	11,60	9,90	7,80	6,40	3,37
1,65V / cell	161,05	121,74	100,19	73,19	51,54	41,90	23,40	17,99	14,31	11,65	10,02	7,83	6,51	3,39
1,60V / cell	172,55	129,14	106,44	77,12	53,70	42,28	24,23	18,46	14,76	12,08	10,18	7,91	6,58	3,40